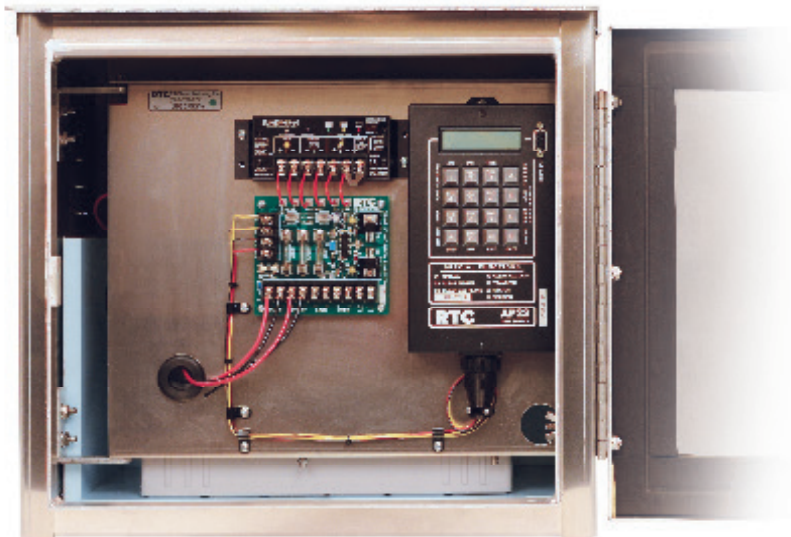


BATTERY SYSTEM CABINETS

RTC Manufacturing constructs flasher system cabinets to house battery-powered control panels in a wide range of configurations to meet your specifications. Sleek design and excellent features — exactly what you should expect from the industry leaders at RTC.



SINGLE BATTERY CABINET

.125" 5052 aluminum cabinet constructed to house a single 108 amp battery with a front mounted control panel. The sturdy construction allows for pole mounting.

APPLICATIONS

- School zone flasher systems
- Pedestrian crossing systems
- Fire station warning systems
- 24-hour flasher systems*
- Oil/gas systems
- Supplemental traffic applications
- Installations requiring small cabinet space

FEATURES

- Locking system with Number 2 APL lock
- Rain flap extending over door opening
- Door opening with a 1.5" door gasket
- Double-thick reinforced bracket mounting area
- 4 screened vents for cross-ventilation
- 4.5" u-bolt, large pole and band-type brackets
- Special Order Options:
 - various control panels depending on application
 - Number 1 APL lock
 - wide range of size configurations

*A 24-hour flasher system application cabinet does not include the time switch and time switch harness shown in picture above

SPECIFICATIONS

- 16.25"H x 18"W x 12.5"D
- .125" 5052 aluminum-sheet construction
- Number 2 APL lock
- Piano-door hinge with stainless attachment bolts
- Necked-down door opening creates a clean appearance
- .5" foam in battery area
- Top edge flattened to match rubber gasket for greater water resistance
- Silicon sealant top and bottom inside edges per TXDOT specifications
- Large enough for a Group 31, 70 lb. 108-amp battery

Helping Kids Get To School Since 1987



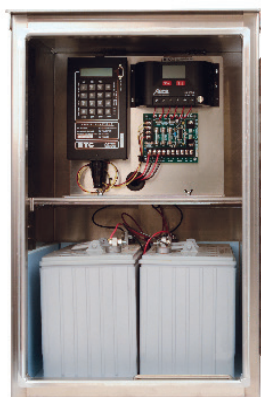
RTC

RTC Manufacturing, Inc.

RTC-Traffic.com | contact our team at Info@RTC-Traffic.com for more information | TOLL-FREE 800.782.8721 FAX 817.274.3610

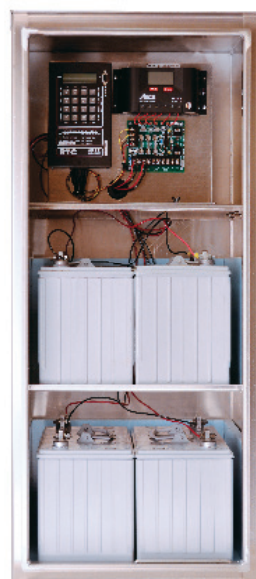
RTC Manufacturing, Inc., 1016 Enterprise Place, Arlington, Texas 76001 | ©2014 RTC Manufacturing, Inc. All Rights Reserved.

BATTERY SYSTEM CABINETS



TWO BATTERY CABINET

.125" 5052 aluminum cabinet constructed to house up to two 108-amp batteries with a top shelf-mounted control panel. The sturdy construction allows for pole mounting.



FOUR BATTERY CABINET

.125" 5052 aluminum cabinet constructed to house up to four 108-amp batteries with a top shelf-mounted control panel. The sturdy construction allows for pole mounting.

APPLICATIONS

- School zone flasher systems
- Pedestrian crossing systems
- Fire station warning systems
- 24-hour flasher systems
- Oil/gas systems
- Supplemental traffic applications
- Installations requiring the additional power of two batteries

FEATURES

- Door handle locking system with Number 2 APL lock
- Rain flap extending over door opening
- Door opening with a 1.5" door gasket
- Double-thick reinforced bracket mounting area
- Screened vents for cross-ventilation
- 4.5" u-bolt, large pole and band-type brackets
- 3-point lock system
- Special Order Options:
 - various control panels depending on application
 - Number 1 APL lock
 - wide range of size configurations

SPECIFICATIONS

- 26"H x 17"W x 15.75"D
- .125" 5052 aluminum-sheet construction
- .25" construction at the two 8"W x 6"H mounting areas
- .5" foam in the battery areas
- Bottom battery area - 12.75"H
- Number 2 APL lock with padlock hasp/stainless through-door mechanism
- Top edge flattened to match rubber gasket for greater water resistance
- Silicon sealant top and bottom inside edges per TXDOT specifications
- Piano-door hinge with stainless attachment bolts
- Handle with .625" square bar for long life
- Large enough for two Group 31, 70 lb. 108-amp batteries
- **Optional:** 3-point locking door with .5" nylon rollers on top and bottom

APPLICATIONS

- School zone flasher systems
- Pedestrian crossing systems
- Fire station warning systems
- 24-hour flasher systems
- Oil/gas systems
- Supplemental traffic applications
- Installations requiring the additional power of four batteries

FEATURES

- Door handle locking system with Number 2 APL lock
- Rain flap extending over door opening
- Door opening with a 1.5" door gasket
- Double-thick reinforced bracket mounting area
- Screened vents for cross-ventilation
- 4.5" u-bolt, large pole and band-type brackets
- 3-point lock system
- Special Order Options:
 - various control panels depending on application
 - Number 1 APL lock
 - wide range of size configurations

SPECIFICATIONS

- 40.125"H x 17"W x 12.75"D
- .125" 5052 aluminum-sheet construction
- .25" construction at the two 8" x 6" mounting areas
- .5" foam in the battery areas
- 2 bottom battery areas - 12.75"H each
- Number 2 APL lock with padlock hasp/stainless through-door mechanism
- Top edge flattened to match rubber gasket for greater water resistance
- Silicon sealant top and bottom inside edges per TXDOT specifications
- Piano-door hinge with stainless attachment bolts
- Handle with .625" square bar for long life
- Large enough for four Group 31, 70 lb. 108-amp batteries
- **Optional:** 3-point locking door with .5" nylon rollers on top and bottom